

WELCOME

Q2/2021 Operation Result Meeting

Apichart Lee-issaranukul

October 29, 2021

THAI STANLEY ELECTRIC PUBLIC COMPANY LIMITED

The completely integrated manufacturer of world class automotive lighting

Agenda

- 1. Market Trend – 2021 (July – September)**
- 2. The 2nd Quarterly 2021 Financial Statement**
- 3. New Product**

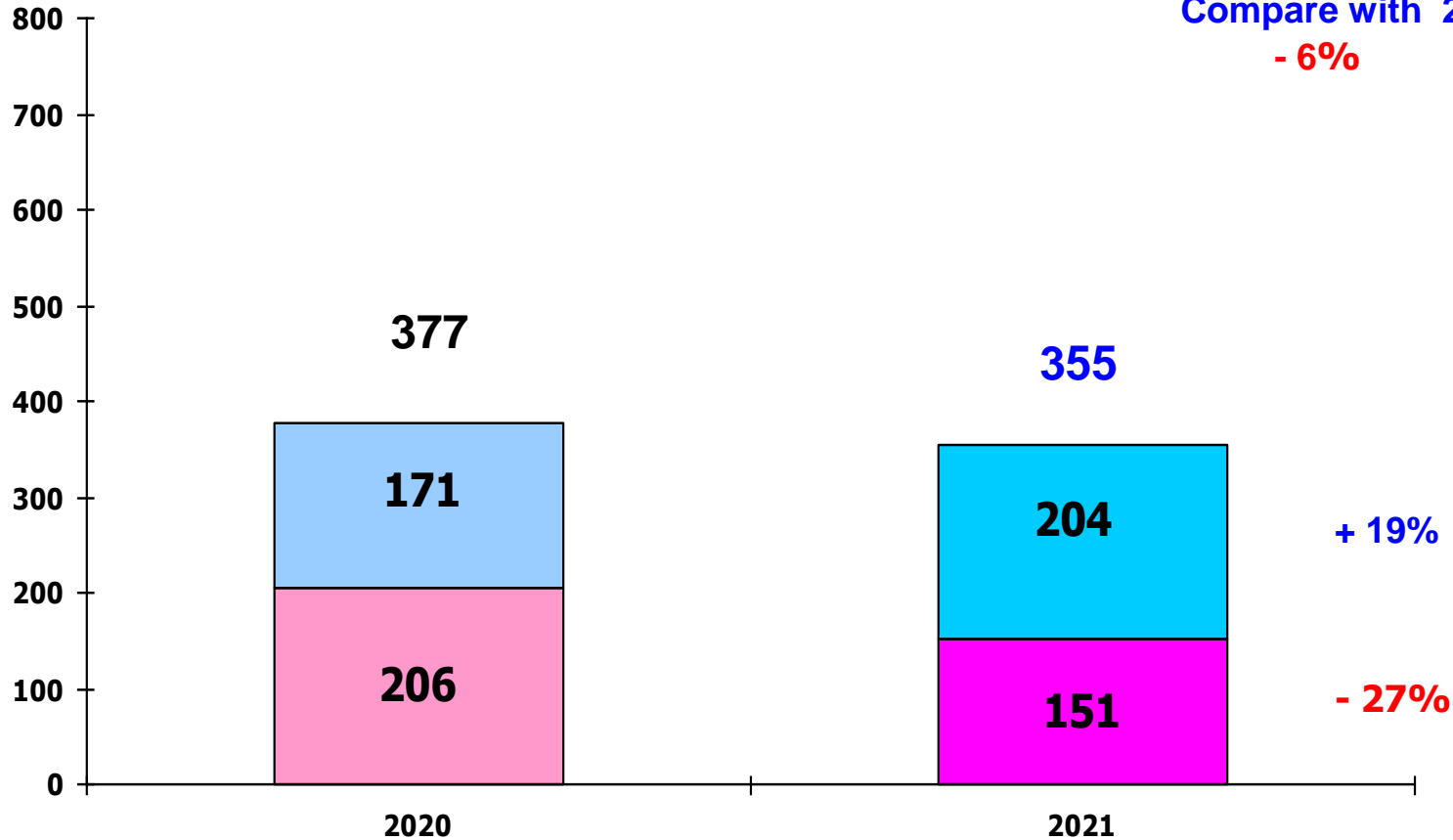
4W Market Sale 2021 (July – September) Domestic & Export

X 1,000 unit

■ Domestic ■ Export

Compare with 2020

- 6%

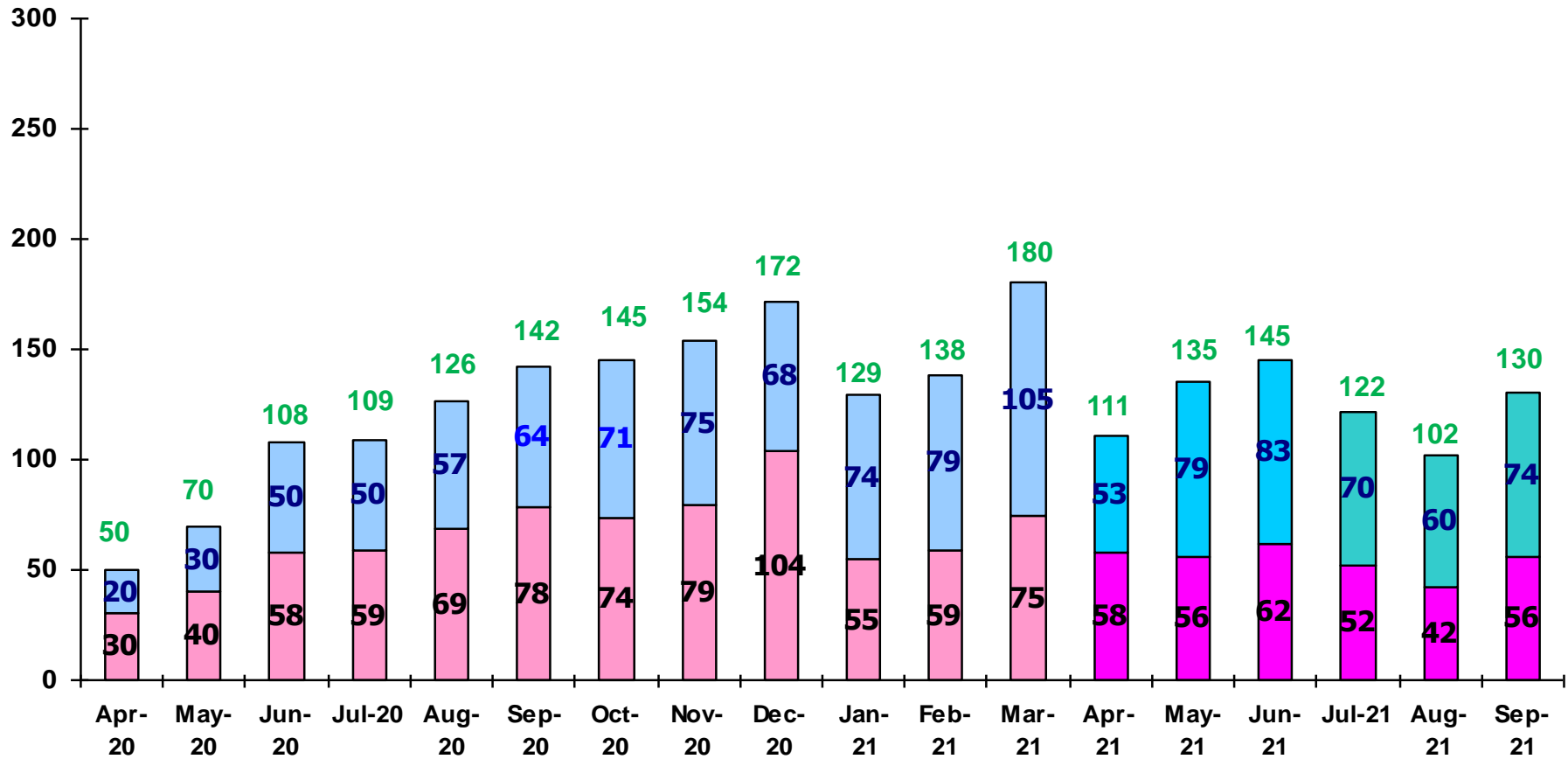


Source: The Federation of Thai Industries

4W (Motorcar) Market Sale (Domestic & Export) (April 2020 – September 2021)

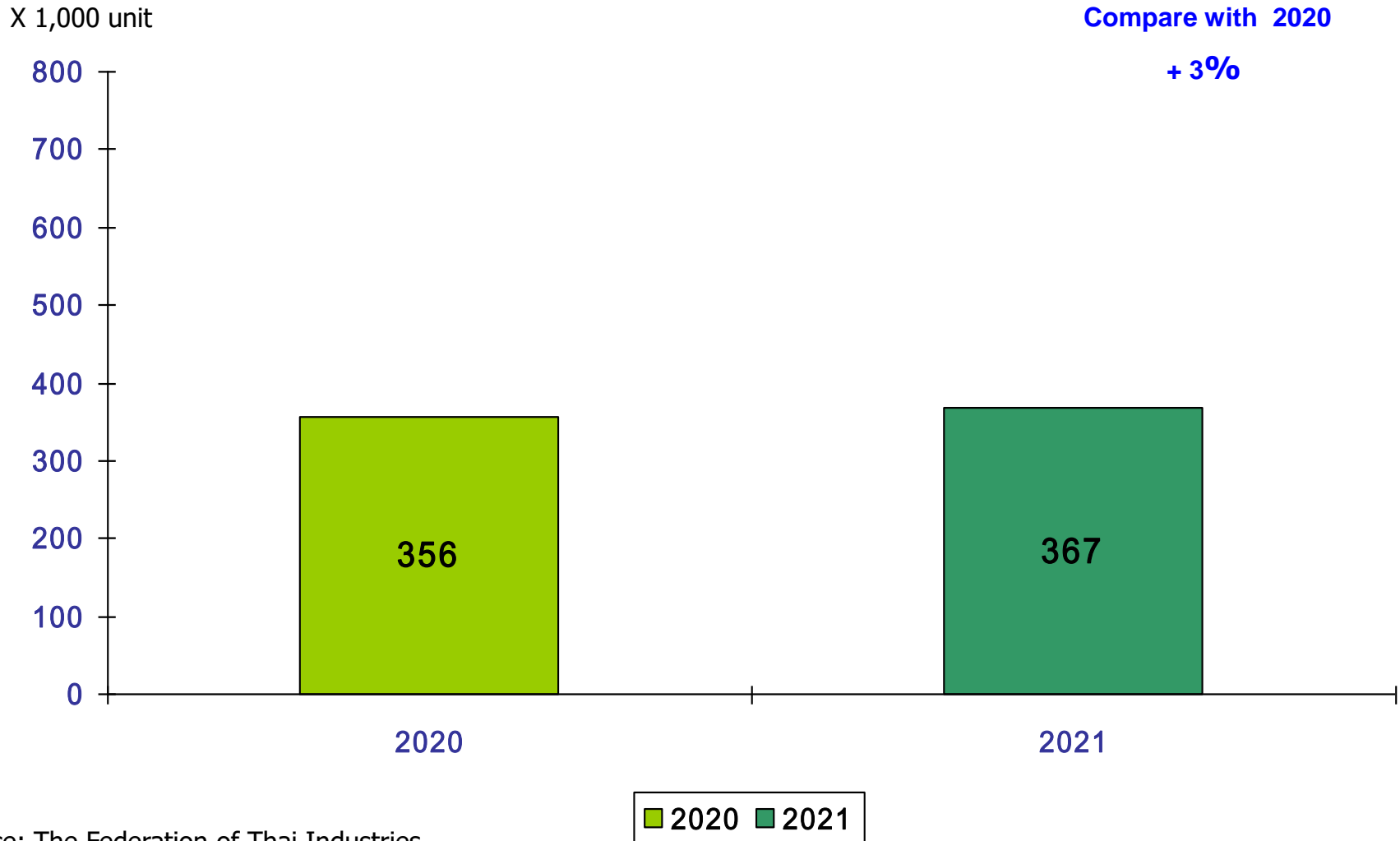
X 1,000 unit

Domestic Export



Source: The Federation of Thai Industries

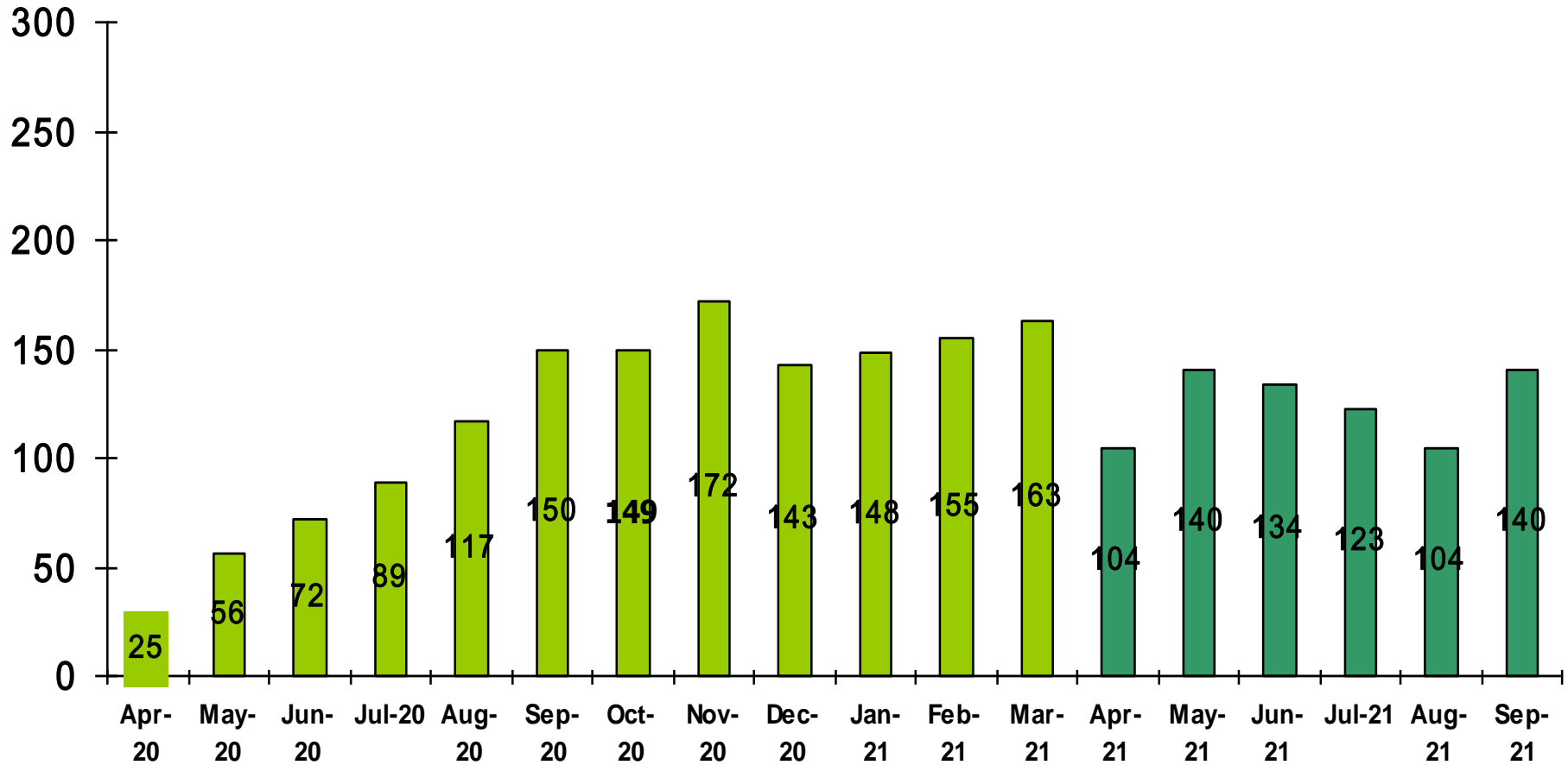
4W Production (July – September 2021)



Source: The Federation of Thai Industries

4W (Motorcar) Production (By Month) (April 2020 – September 2021)

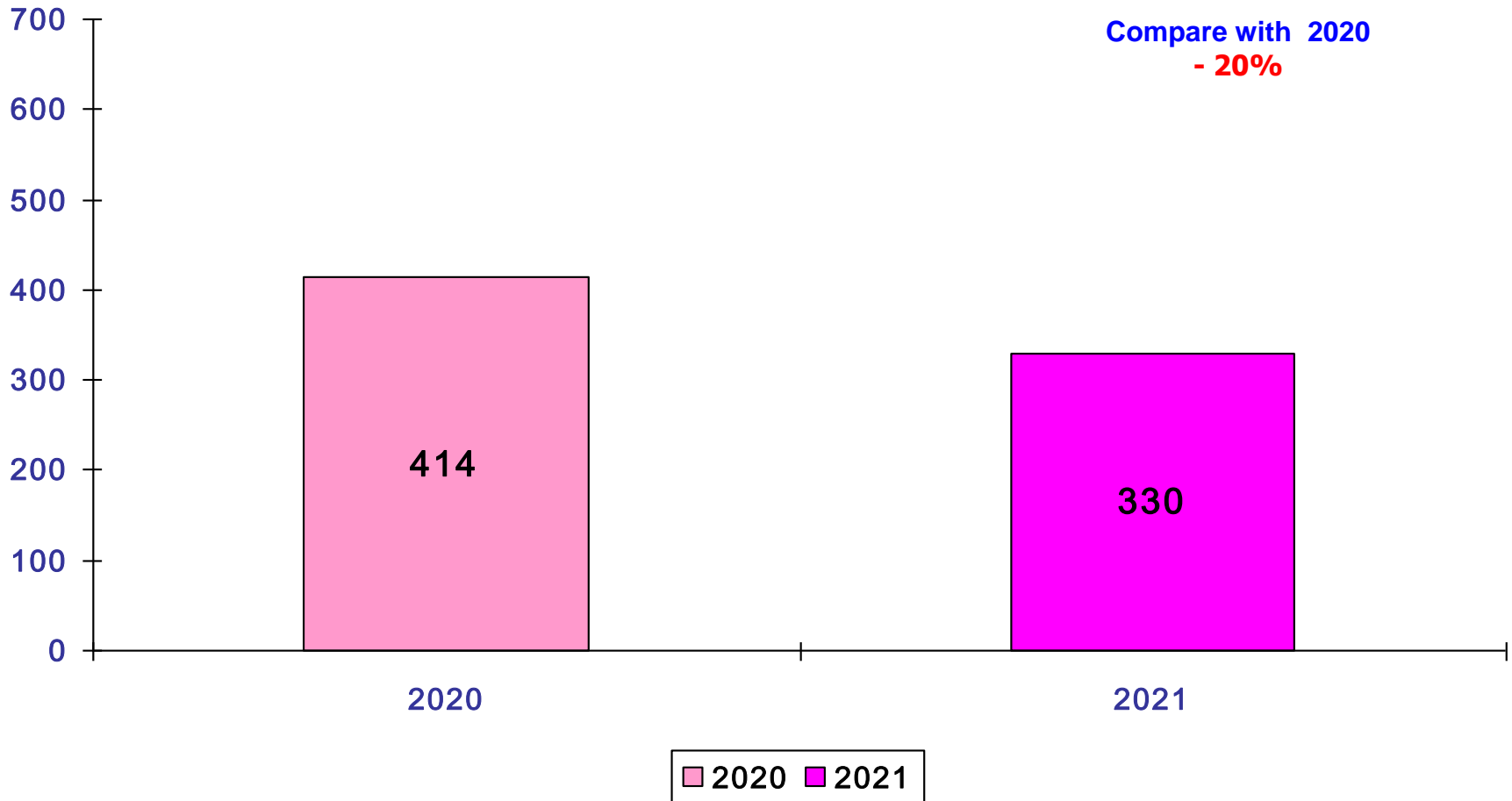
X 1,000 unit



Source: The Federation of Thai Industries

2W Sales - Domestic (July – September 2021)

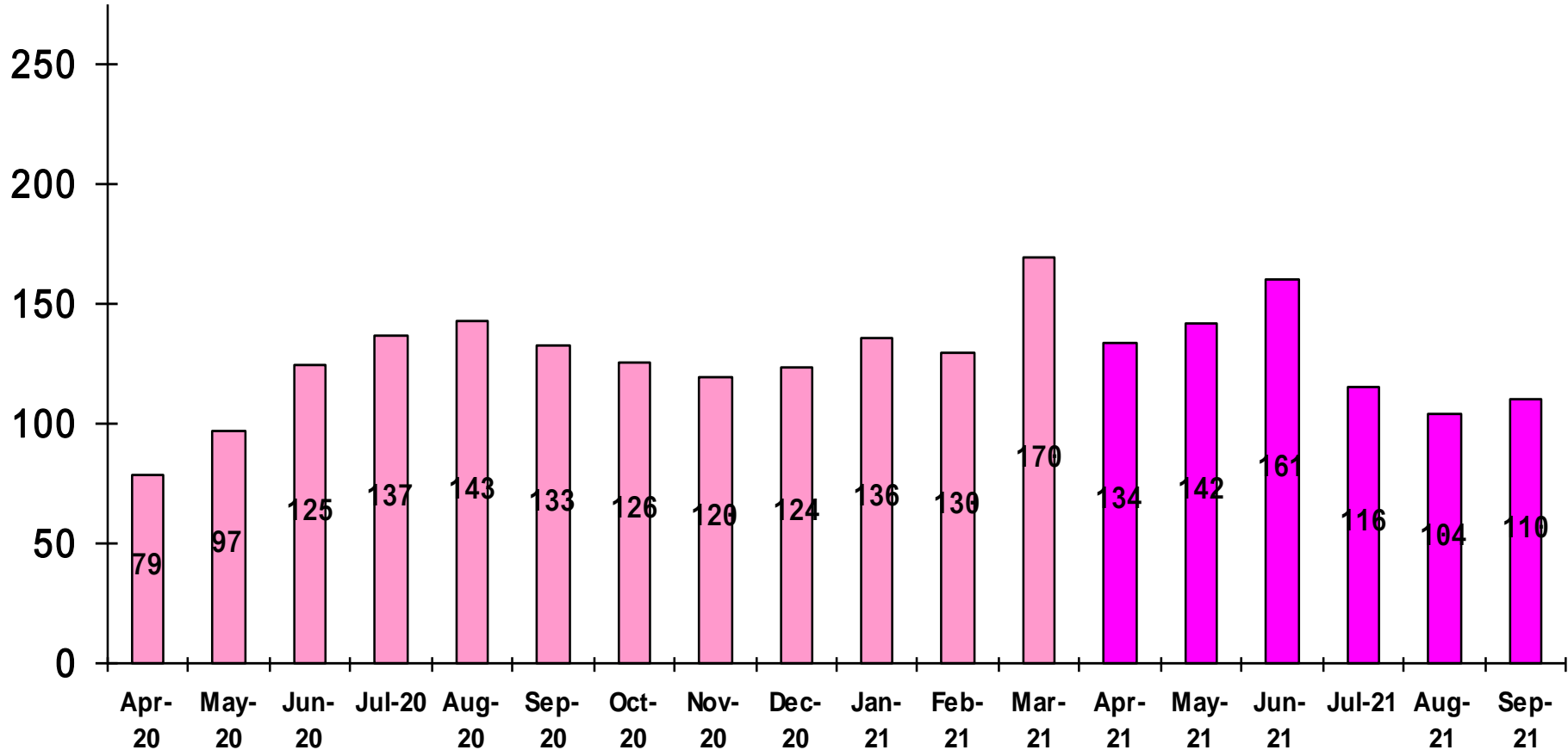
X 1,000 unit



Source: The Federation of Thai Industries

2W (Motorcycle) Sale (By Month) April 2020 – September 2021

X 1,000 unit



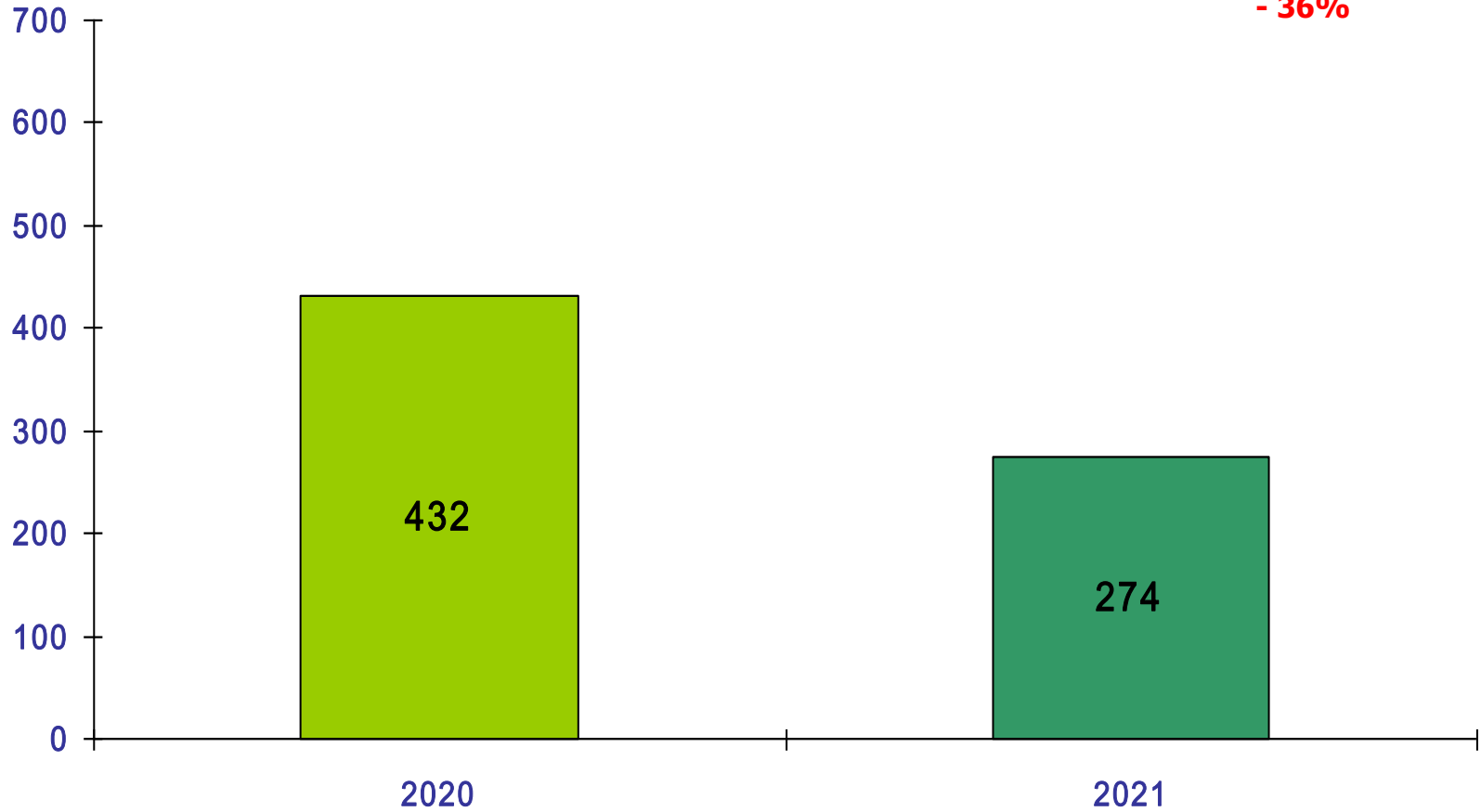
Source: The Federation of Thai Industries

2W Production (July – September 2021)

X 1,000 unit

Compare with 2020

- 36%

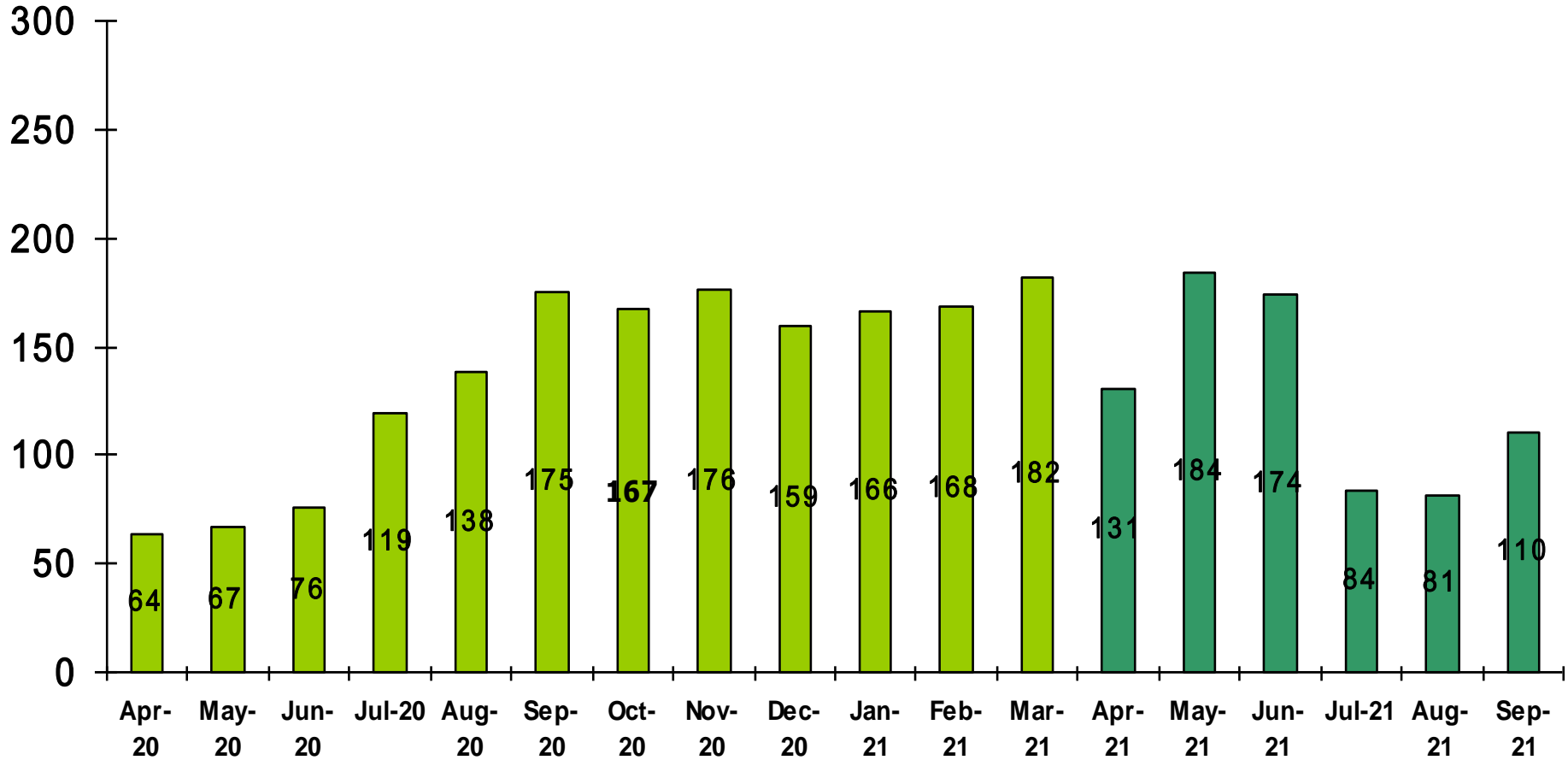


Source: The Federation of Thai Industries



2W (Motorcycle) Production (By Month) April 2020 – September 2021

X 1,000 unit



Source: The Federation of Thai Industries

Agenda

- 1. Market Trend – 2021 (July – September)**
- 2. The 2nd Quarterly 2021 Financial Statement**
- 3. New Product**

Statement of Financial Position

Unit: Million Baht

(Equity Method)	30-Sep-2021	31-Mar-2021	Change (%)
Current Assets	8,345.47	8,000.16	4.32
Non Current Asset	13,470.43	13,542.45	(0.53)
Total Assets	21,815.90	21,542.61	1.27
Current Liabilities	1,733.06	1,967.44	(11.91)
Non Current Liabilities	923.51	857.39	7.71
Total Liabilities	2,656.57	2,824.83	(5.96)
Shareholders' Equity	19,159.34	18,717.78	2.36
Total Liabilities and Shareholders' Equity	21,815.90	21,542.61	1.27

The Three Month Period

Statement of Income

Unit: Million Baht

(Equity Method)	30-Sep-2021	30-Sep-2020	Change (%)
Sales	3,017.62	2,531.97	19.18
Cost of Sales	2,536.00	2,231.60	13.64
Gross Profit	481.63	300.36	60.35
SG&A Expense	246.12	175.89	39.93
Other Income	49.23	80.33	(38.72)
Share of profit from investments in associates	40.97	61.12	(32.97)
Profit before Income Tax	325.71	265.92	22.48
Net Profit for the period	267.15	254.16	5.11

The Six-Month Period

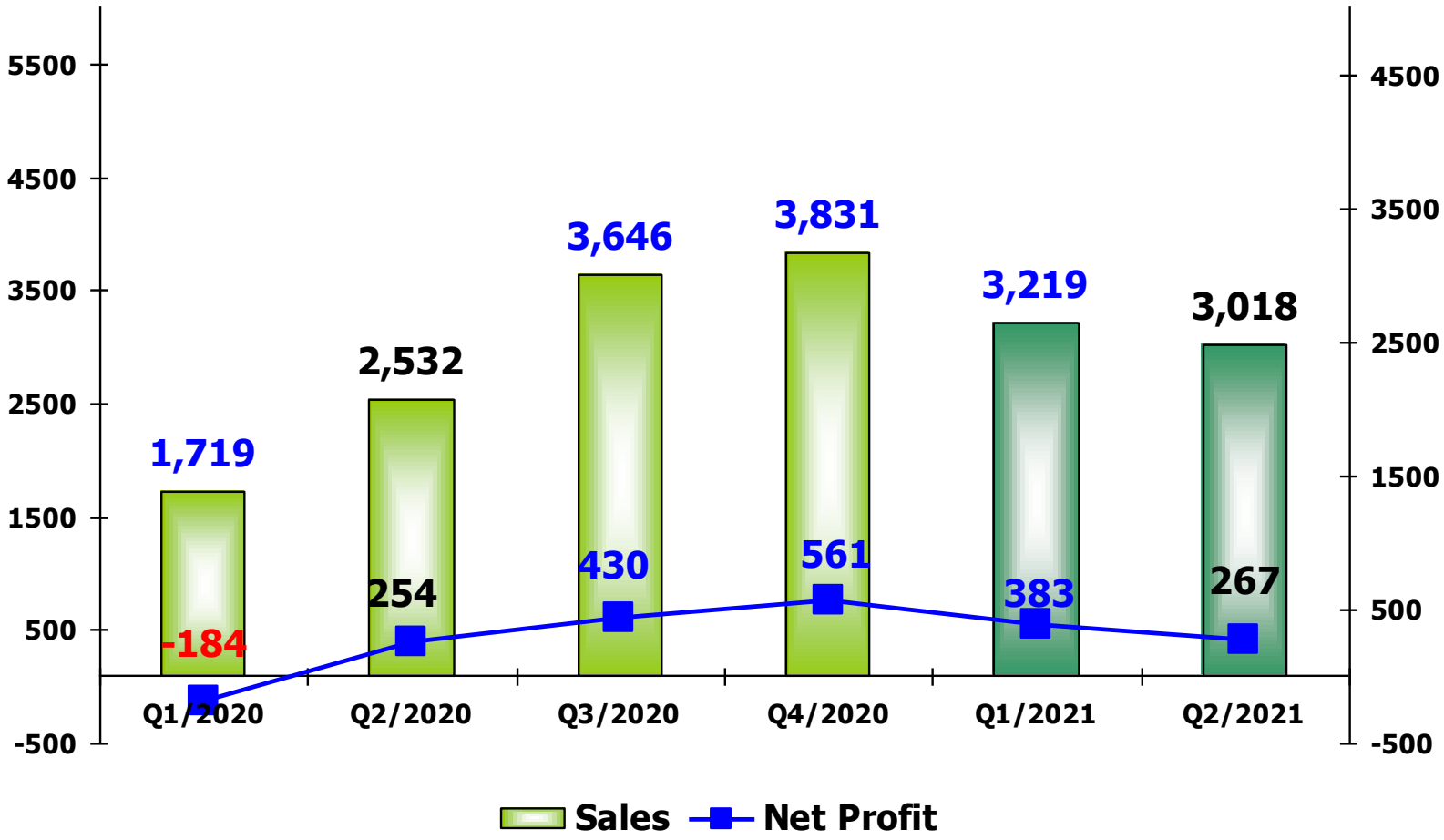
Statement of Income

Unit: Million Baht

(Equity Method)	30-Sep-2021	30-Sep-2020	Change (%)
Sales	6,236.39	4,250.61	46.72
Cost of Sales	5,133.34	4,024.70	27.55
Gross Profit	1,103.05	225.91	388.28
SG&A Expense	488.13	336.94	44.87
Other Income	77.47	101.89	(23.97)
Share of profit from investments in associates	112.65	81.27	38.62
Profit before Income Tax	805.04	72.13	1,016.16
Net Profit for the period	650.63	70.11	828.01

Analysis by Quarterly

Unit : MB The Equity Method



Statement of Cash Flows

Unit: Million Baht

(Equity Method)	30-Sep-2021	30-Sep-2020
Net Cash received from Operating Activities	1,124.94	1,115.08
Net Cash used in Investing Activities	(1,368.12)	(1,038.44)
Net Cash used in Financing Activities	(421.44)	(632.16)
Net increase / - decrease cash / Cash equivalents	(664.62)	(555.52)
Cash / Cash equivalents at beginning of the period	2,663.33	3,177.44
Effects of Exchange rate changes	4.73	3.88
Cash / Cash equivalents at end of the period	2,003.44	2,625.80

Agenda

- 1. Market Trend – 2021 (July – September)**
- 2. The 2nd Quarterly 2021 Financial Statement**
- 3. New Product**



Rear Combination Lamp



Head Combination Lamp

This slides contain statements that constitute forward-looking statements, plans for the Future, management targets, etc. relating to the Company and its subsidiaries. These forward-looking statements are base on current assumptions of future events and trends , which may be incorrect and are subject to risks and uncertainties.

Actual result may differ materially from those in such forward-looking statements as a result of various factors.

Unless otherwise noted, the financial data contained in these materials are presented under Thai Accounting Standards (TAS). The company disclaims any obligation to update or to announce any revision to forward-looking statements to reflect future events or developments.

Information concerning financial institutions other than the company and its subsidiaries are base on publicly available information.

These materials do not constitute an invitation or solicitation of an offer to subscribe for or purchase any securities and neither this document nor anything contained herein shall form the basis for any contract or commitment whatsoever.

Download : The presentation files at

[www.thaistanley.com/Investor Relations/Analyst Meeting Presentation](http://www.thaistanley.com/Investor%20Relations/Analyst%20Meeting%20Presentation)

For further questions, please contact :

Ms.Rattanaporn Boonwong : Investor Relations

Tel : 662-581-5462-3 (10 lines) ext. 1164

Fax: 662-581-5397

E-mail : rattanaporn@stanley.co.th